

BIG RED®

SOUTH AFRICA'S NEW KID ON THE BLOCK

BIG RED®

Modular Waste Water Treatment Plants

info@ecotanks.co.za
083 447 1482

Brand new, tried and tested **modular waste water treatment plants**

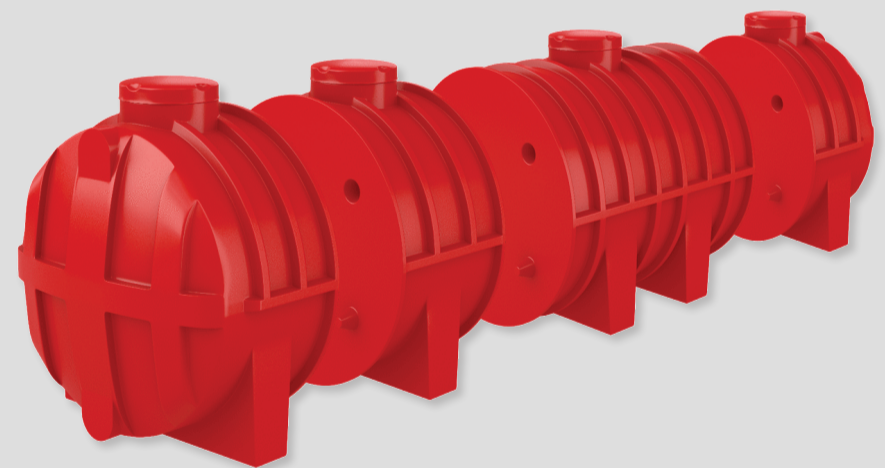
FEATURES & BENEFITS

- Completely plug & play, modular Waste Water Treatment Plants
- Flow-rates from 1kL/day – 400kL/day
- Domestic plants from 4 people to 12 people (garden cottages to large homes)
- Commercial/industrial custom designed systems up to 2000 people
- Manufactured using virgin LLDPE
- 100% recyclable
- Re-use every drop for irrigation, dust suppression, toilet flushing and many other applications
- Treats combined grey and black “whole house” effluent
- Eco Tanks is SABS ISO 9001 2017 accredited
- Discharge parameters meet and exceed DWS general standards
- Below ground, above ground, containerised for export
- Biological (AR, MBBR and RAS) process
- Ideal for remote estates, rural schools, clinics, hospital and urban developments
- No municipal sewer connection available? No problem
- Cost effective and efficient and solar compatible
- Access to sanitation is a right, not a luxury

BACKGROUND

After many years of treating wastewater with our combination of old school underground septic and conservancy tanks, clever plumbing and mechanical know how, we felt a need to respond to the demand for a packaged solution, so we embarked on combining all the parts and processes of our successful waste water treatment plants into one ‘plug & play’ unit, and make this available to South Africa in a fully modular packaged waste water treatment plant, off-the-shelf and ready to install.

Our technical team together with industry experts are proud to release the latest combination of technologies in waste water management for domestic and industrial use.



eco
TANKS

The new household name
in water tanks

SCAN FOR MORE INFO!

